

Fresh from the Kettle

Newsletter of the Kettle Creek Watershed Association

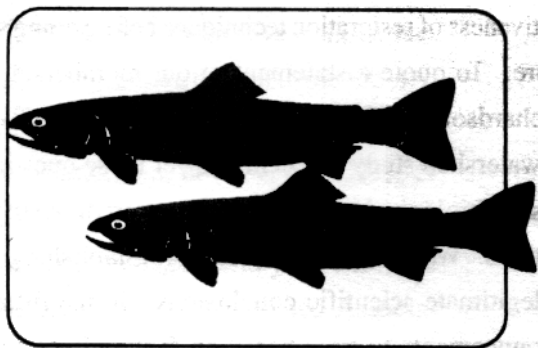
March 1999

Kettle Creek Watershed Association Unveils Plans for 1999

In union with a coalition of public and private partners, the Kettle Creek Watershed Association (KCWA) announced at its regular board of directors meeting this past January 16, its plans in 1999 to conserve and restore the Kettle Creek watershed in northcentral Pennsylvania.

According to Clinton County resident, John Larson, KCWA chairman, "Our goals for 1999 are to develop the Kettle Creek Watershed Restoration and Education Project (Project) and to continue our stream assessment work."

The Project includes creation of at least three model restoration sites that are linked with public education and training components. Restoration projects involving stream bank stabilization and fish habitat improvement will restore approximately 3,000 linear feet of stream.



Did you know that native brook trout are also known as hemlock trout? See page four for details of the KCWA project for hemlock trout.

Riparian forest buffers will also be established in conjunction with the bank and fish habitat work. The model projects will be incorporated and featured in a watershed-wide education program. The education program includes 1.) environmental fact sheets; 2.) landowner conservation guides; 3.) watershed newsletters; and 4.) public meeting and media events at the model project sites.

This Project presents an excellent opportunity to educate land users on the benefits of a healthy watershed and what they can do to make it happen. According to David Putnam from the U.S. Fish and Wildlife Service, "this is one of the largest and most visible watershed conserva-

"This is one of the largest and most visible watershed conservation projects in PA."

tion projects in Pennsylvania. We are expecting to see measurable environmental results from our instream habitat work and bank stabilization work in the first year "

The stream assessment work involves continuing where we left off last year. We have received a grant from the Pennsylvania Department of Environmental Protection, the majority of which will be used for assessment work. Last summer, students from Lock Haven University began the project. We will, in time, develop a comprehensive plan for the entire watershed using the information gathered from the assessment work.

The January board meeting featured presentations by some of the KCWA's major partners including the Pennsylvania Fish and Boat Commission (PFBC), Trout Unlimited (TU), U.S. Fish and Wildlife Services (USFWS), and the Canaan Valley Institute (CVI). Each of these partners offered funds and technical services for (continued on page 2)

(continued from page 1)

Kettle Creek projects in 1999, remarked that Kettle Creek is an ideal candidate to receive support from numerous individuals and government agencies because most of its is on public property and is designated as an EV (Exceptional Value Watershed) by Pennsylvania Department of Environmental Protection.

In other developments, Joe McGurrin, Director of Resources for TU, commented that TU is committed to hiring a full-time project coordinator to help KCWA. The USFWS led by David Putnam, Coordinator of the USFWS's Partners for Fish and Wildlife Program, was appointed restoration project leader and Janie French, PA Watershed Coordinator for CVI, offered help to KCWA in the form of technical assistance with the science-based approach to watershed management.

Message from the President

It's a real pleasure to give this report to our members and supporters. First of all, thank you to all of you who have helped and sacrificed your personal time to make our first year such a success. I would like to thank Denny Barner, Karen Labant and John Larson, three such people who serve as active Board Members with local influence; they have not missed a meeting since joining our Board and I confer with them regularly on important matters. They are a microcosm of a true Kettle Creeker, we care, we want a healthy watershed, and we will help.

Going forward, our primary objective of the Kettle Creek Project is to conduct a local community-driven project to restore and preserve Kettle Creek and all of its tributaries. We will work to educate landowners and others who cherish Kettle Creek about the environmental issues that impact the watershed and to conduct an assessment study which will pinpoint specific problems. The final product of our efforts will be a watershed conservation and management plan. This document will guide the wise and sustainable use of the watershed and will be endorsed by townships, cooperating state agencies and landowners. We are currently in the second year of studies that will result in a complete watershed assessment report.

In five years, we should have our watershed conservation and management plan in place. At that time, we will begin wide-scale stream construction projects. In the meantime, since there are still many pieces of the puzzle mission, we will concentrate on the tasks at hand, namely studying, doing, studying some more, trying again, etc. In 1999, we will develop at least three model projects and use these areas as reference sites to test the effectiveness of restoration techniques before doing similar projects in the future. To quote a statement in our membership form written by Jude Richardson, KCWA Board Member, "The KCWA has started a scientific watershed study that will answer these questions by providing a data base of biological information necessary to justify indicated corrective actions. We are committed to first establishing a base on which to draw legitimate scientific conclusions. In the future, we will limit our pronouncements to ones based on fact and not supposition." No one could say it any better.

(continued on page 3)

(Continued from page 2)

We have preliminary designs for the bank stabilization and fish habitat work planned for this year. We have established and created a permanent tree nursery facility in 1998 that will be a staging and supply area for our riparian reforestation efforts for projects in 1999 and beyond. We are actively seeking funding and believe that we can treat most of the problems in the watershed including a complete AMD clean-up within the next 15 years. To this end, we need your support. We will use membership contributions as seed money for fund general KCWA expenses and to pay project expenses that can be reimbursed under our grants.

I hope you share our sense of accomplishment and optimism for the Kettle Creek Watershed and future cooperative efforts involving the KCWA, local landowners and other partners. Our accomplishments and recent developments certainly indicate that we have built a credible organization in just over a year, one that will use your contributions both wisely and judiciously. So, please give a generous tax deductible contribution.

While Kettle Creek will require considerable time to understand, we should not be discouraged by the monumental task before us since the prospects for ultimate success are terrific. The KCWA is supported by a dedicated and motivated group of landowners who will guide everything we do; there is good baseline data on the fishery; and the state agencies appear to be motivated to restore the watershed. The Kettle Creek Watershed Project represents a new model of river conservation, merging AMD remediation, habitat restoration, sustainable economic development and community development.

(continued on page 4)



Acid Mine Drainage

The KCWA through the leadership of Bill Sabatose, Chairman of the AMD Subcommittee, has been the leader in organizing a partnership of private and government groups to study the Acid Mine Drainage problem affecting the lower Kettle Creek. Bill and his group have marched throughout both the east and west sides of the lower Kettle and begun the process of identifying sources of the pollution. The problem is large and frankly there can be no quick fixes. The good news is that the AMD partners have already made progress in two significant ways.

Firstly, the Pennsylvania DEP, Bureau of Abandoned Mines, has agreed to hire a consultant to assess the AMD problem and develop an action plan for its remediation. Secondly, the Bureau is planning to construct a passive remediation pilot project at one discharge site on the Two Mile Run. While this project will certainly not be sufficient to make a noticeable difference to the fishery, it will begin the process.

Anyone interested in helping with the AMD Subcommittee should contact Bill Sabatose at Keystone Road, Box 294-C, Brockport, PA 15823.

(continued from page 3)

It is a community based-watershed-wide project based on sound science and sustainable economic development. While much of the work of the project is slow and expensive, the results will be enduring. Please help your Board of Directors make this a year to remember for the Kettle Creek Watershed Association.

Conservation First,
Jim Dubisz

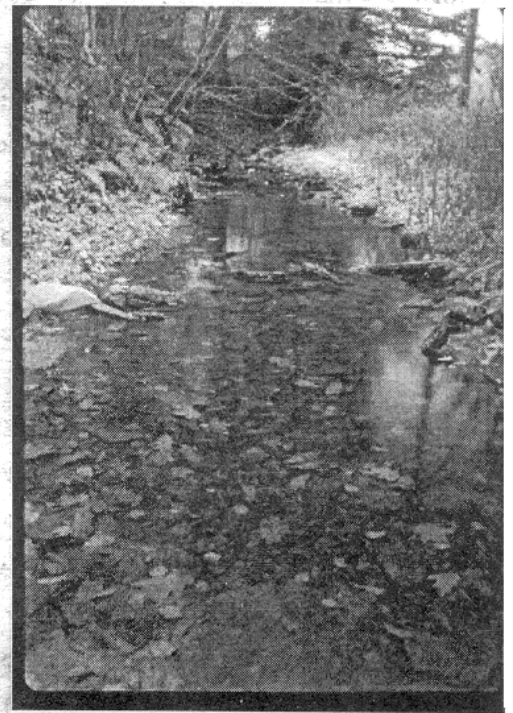
Annual Membership Meeting

The annual membership meeting of the Kettle Creek Watershed Association is scheduled at 7 p.m. on Friday, April 16, at the Kettle Creek Hose Company in Cross Fork.

We will have presentations on the year's upcoming activities and elect directors. It should be a great way to start the opening weekend of Trout Season. Please stop by!

Habitat for Hemlock Trout

Recent studies by the Pennsylvania Fish and Boat Commission (PFBC) indicate that Hemlock Trout (Native Brook Trout) often thrive in adverse environmental conditions (floods, droughts, heavy ice) that decimate other non-native trout species (Browns and Rainbows). In the Germainia Branch of Kettle Creek in Potter County, the KCWA in partnership with the Abbot Township Supervisors, Mansfield University, the Potter County Probation Department and the Habitat Management Section of the PFBC, are developing a project that will significantly increase the native Brook Trout habitat in this stream. The project will include: 1.) public informational meetings this spring; 2.) a complete scientific assessment of the Germainia Branch watershed to determine factors that may be limiting trout populations; 3.) development of a comprehensive plan of restoration; and 4.) the formation of a citizens



volunteer monitoring program that will train local residents and school children how to routinely perform biological assessments in order to determine the health of the watershed.

Plans have been made this summer to install six jackdam structures in this section of the Germainia Branch (that was channelized years ago to accommodate road construction) to improve habitat for adult Brook Trout and to serve as a reference site to guide future restoration efforts. This site is also one of several model restoration projects that will be featured in an educational campaign beginning this spring throughout the Kettle Creek watershed. In future years, the site will be periodically evaluated to determine how the stream channel and trout populations have adapted to these structures.

(continued on page 5)

(continued from page 4)

The KCWA has filed a grant application with the U.S. Environmental Protection Agency to fund a portion of the project.

It is hoped that donations from local residents can be matched with EPA funding so plans can be finalized. Financial and other support for this project has been made possible through a grant provided by the Pennsylvania Association of Conservation Districts, Inc., the Department of Environmental Protection's Bureau of Watershed Conservation -- Bureau of Water Quality Protection, PA Chesapeake Bay Program, and EPA's Section 319 Program. More detailed information can be obtained by contacting Rhea Beacker at (814) 435-8144, Charles Bach at (814) 435-6696 or by writing the Kettle Creek Watershed Association at RR #1 Box 184D, Coudersport, PA 16915.

Partners Update

The following is a list of some of the organizations that assist the KCWA. More detailed information can be obtained from Jim Dubisz of the KCWA at RR #1 Box 184D, Coudersport, PA 16915 or by e-mail to jdubisz@adelphia.net. Our thanks to all of our partners!

- w U.S. Fish and Wildlife Service
- w U.S. Department of Agriculture, National Resources Conservation Service
- w Trout Unlimited
- w Pennsylvania Department of Conservation and Natural Resources (DCNR)
- w DCNR, Bureau of Forestry
- w Pennsylvania Fish and Boat Commission
- w Pennsylvania Department of Environmental Protection
- w Potter and Clinton County Conservation Districts
- w Headwaters RC&D
- w Lock Haven University
- w Mansfield University
- w Canaan Valley Institute
- w Potter County Probation Department
- w Local Townships

To Become a Member

For more information, become a member or give a tax-deductible contribution to the KCWA, please contact Tim Bizzaro, Membership Chairman, at (814) 642-7211, e-mail bizzaro@adelphia.net, or return the form on page 6 and your check to the Kettle Creek Watershed Association, RR #1 Box 184D, Coudersport, PA 16915.

Visit the KWCA website at
www.kettlecreek.org for
updates and information!

Kettle Creek Watershed Association

RR #1, Box 184D

Coudersport, PA 16915

Kettle Creek Watershed Association

The goal of the Kettle Creek Watershed Association (KCWA) is to conserve and restore the Kettle Creek watershed and trout fishery through a public/private partnership that serves as a catalyst for long-term watershed conservation. Project objectives are to 1.) develop a watershed assessment and conservation plan; 2.) reclaim the lower Kettle Creek through treatment of acid mine drainage; 3.) prevent polluted runoff and restore river geomorphology in the upper and middle Kettle Creek watershed; and 4.) implement a community information and education program that will strengthen the existing watershed association and sustain conservation efforts in the future

Yes! Sign me up as a KCWA member:

I choose to make a membership contribution as indicated (please check one):

- ☐ Regular \$5.00
- ☐ Contributor \$10.00
(Receive a KCWA patch)
- ☐ Stewardship ~~\$30.00~~ 20.00
(Receive a KCWA patch & hat)
- ☐ Conservationist \$100.00
(Receive a KCWA patch, hat and T-shirt. Please indicate size of T-shirt)

___L ___XL ___XXL

In fact, I'd like to make an **additional** contribution to help fund specific project related expenses as designated below:

	% designated
Biophysical Assessments	_____
Watershed Education	_____
Model Projects	_____
Acid Mine Drainage Project	_____
General Fund KCWA	_____
Total Project Contribution	\$ _____

Name: _____

Address: _____

Telephone: _____

FAX: _____